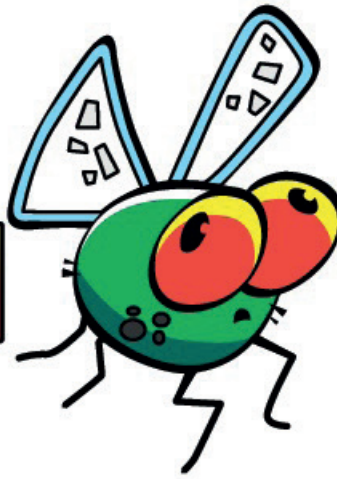


BPN: 200166618
VAT: 10069306

3 Glen Clova Ave,
Highlands,
Harare.

bugmen263@gmail.com

0773 275 680
0773 588 764
0772 327 177
0712 607 096



Dos and don'ts for termite proofing



STEP 1:

Eradicate all visible termite nests at the proposed construction site.

DO NOT disturb them, it is far better to treat them **FIRST** then continue with site preparation.

Use a pest control professional, The Bug Men will get it right from the start.



STEP 2:

Remove all tree stumps, roots and other wooden material from the site. You do not want to attract termites

Wooden stumps etc., will attract and be eaten by termites, creating a cavity under the foundations. Cracks and subsiding may result.



STEP 3:



Complete and ready for proofing

Surface layer of fine substrate 25mm thick

Backfill must be well compacted and rubble covered with a fine substrate for a minimum of 25mm

Rubble cannot be treated effectively, **NO GUARANTEES** if the foundation is not prepared properly.



STEP 4:

Ensure that all building materials have been removed from the area to be treated. Bricks, steel, planks, scaffolding, excess sand etc.

The area to be treated should be devoid of obstructions so that a continuous unbroken layer of chemical is achieved.



STEP 5:

All plumbing and electrical cable to be below the slab should be in place **BEFORE** the treatment

The surface **MUST NOT** be disturbed after it has been treated

You are now ready for termite proofing, call The Bug Men or your pest control professional.



STEP 6:

After treatment, cover with plastic as soon as possible. Continue with foundation steelwork then throw the slab as soon as possible

DO NOT water the treated area

DO NOT disturb the treated surface substrate

DO NOT leave the treated foundations exposed for more than three days.



STEP 7:

Once construction is near completion and you are ready to lay coping/ driveway/other around the perimeter of the structure; the perimeter must be treated

This is **VERY** important as it will prevent termites from using your walls to access ceiling timbers and other timber inside your house. This must not be overlooked.